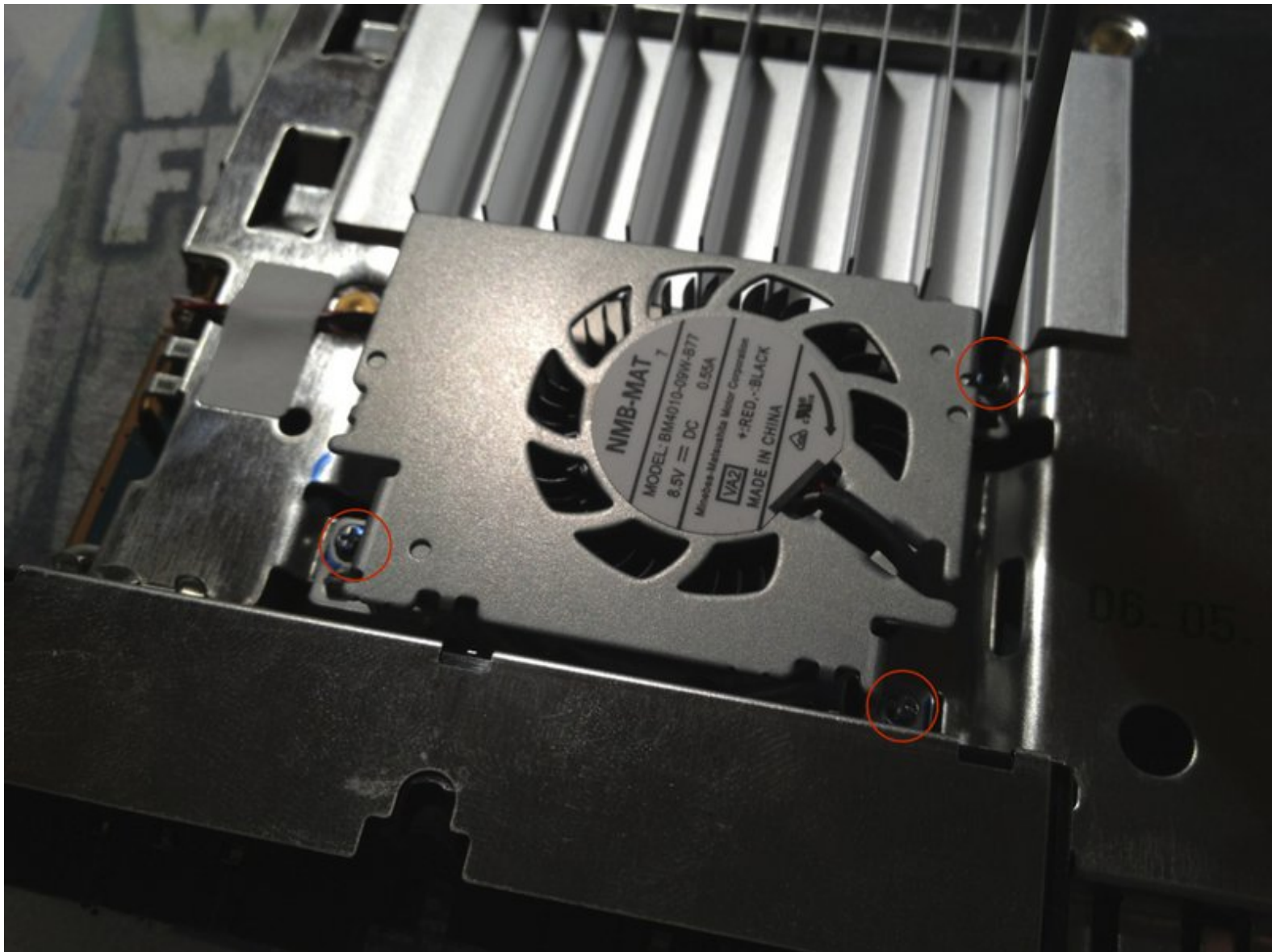




# PlayStation 2 Slimline Fan Replacement

How to replace a PS2 Slimline fan

Written By: tloesner





## TOOLS:

- [Metal Spudger](#) (1)
- [Phillips #00 Screwdriver](#) (1)
- [Phillips #1 Screwdriver](#) (1)

To reassemble your device, follow these instructions in reverse order.